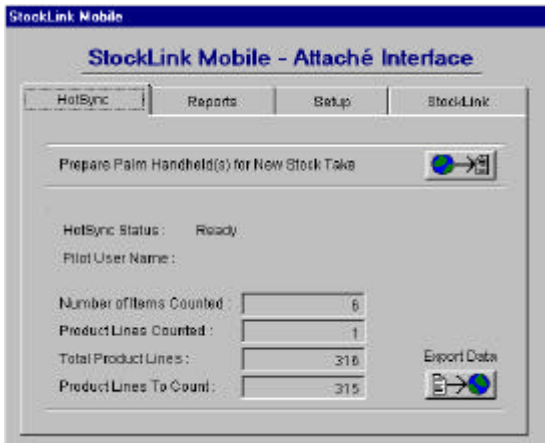


StockLink Mobile

Portable Stock-Take and Data Entry Solution

StockLink Host Software

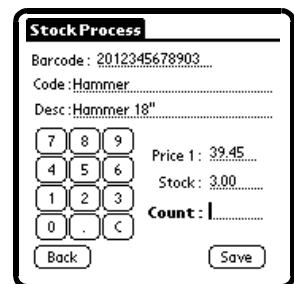
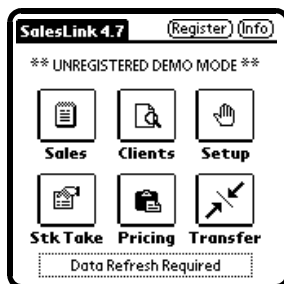


StockLink integrates with the following accounting packages :
Profax, Attache, Retail Plus, Prophet, NZA Gold, Synergy
Accounting systems may require additional file transfer modules or Host applications.

StockLink Mobile turns a palm OS handheld into a powerful stock take tool. Using the Symbol Palm OS handheld devices with built-in barcode scanners, stock takes become efficient and precise. All this is easy to use, inexpensive to purchase and maintain, and small enough to fit in your pocket!

- **Cut stock-take time in half**
- **Do rolling stock-takes with ease**
- **Maintain accurate stock levels**
- **Portable inventory information**
- **Check prices by scanning**

StockLink Palm Screen Shots



StockLink has many configuration options. Screen shots may differ depending upon version.



Symbol SPT-1500

Symbol SPT-1700

Pocket-sized Productivity for People on the Move

Symbol Technologies has combined the latest bar code scanning technology with the Palm OS® Platform to create the SPT 1550 and SPT-1800. Based on the popular Palm III™, the SPT range is a powerful productivity tool, enabling users to capture and manage data with unparalleled convenience and functionality.

Symbol SPT-1550

Palm Operating System
Integrated Laser Scanner
2 Mb Ram (Optional 4mb)
Small Form Factor
Battery Powered 2 x AAA

Symbol SPT-1800

Palm Operating System
Integrated Laser Scanner
2 Mb Ram (Optional 4,8)
Ruggedized Housing
Rechargeable Lithium-ion Batteries

StockLink Mobile Software and handheld devices are purchased separately

Contact :

Software Requirements

- Check with accounting software supplied for the modules
- Required to interface your system Eg ODBC, File Transfer
- Palm Desktop 4.0 with HotSync.

StockLink Mobile Software, StockLink Host, StockLink Remote, copyright I.T. Link Limited 2000,2001,2002,2003 P O Box 1333, Christchurch New Zealand.
Phone 64 3 374 6490 Fax 64 3 374 6493 Email - sales@itlink.co.nz

Minimum Hardware Specification

- A PC Based Computer with a pentium or higher processor
- CD ROM Drive for software Installation
- 32 MB of Memory for Windows 95, 64 MB for NT 4.0, XP
- Hard Disk Space required for installation - 25 MB
- Available Serial Connection Port