

# SalesLink Palm Server

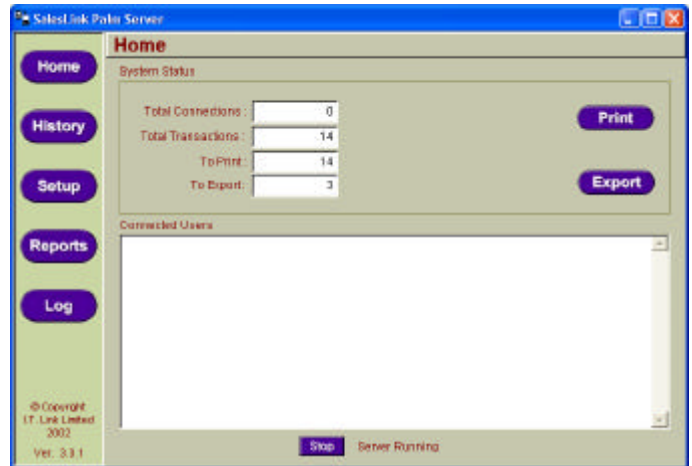
## Portable Business Software

SalesLink Palm Server provides a central 'hub' of communication between your head office and staff on the road, using SalesLink Mobile and Palm handheld devices.



SalesLink Palm Server uses the Internet to connect palm devices with head office, to receive and process new orders/invoices and update handheld devices with the latest stock and customer information.

What's more the server can handle up to 40 device connections simultaneously and because it uses TCPIP (Internet connectivity) palms can connect from anywhere in the world.

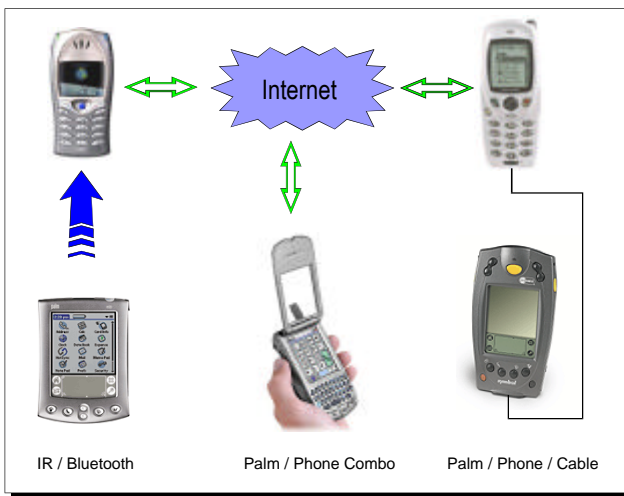


The screenshot shows the 'History' page of the SalesLink Palm Server. It displays a table of transaction logs with the following columns: Date, Report, Date, Transaction ID, Customer ID, Start, Total, Order No., and Customer. The data is as follows:

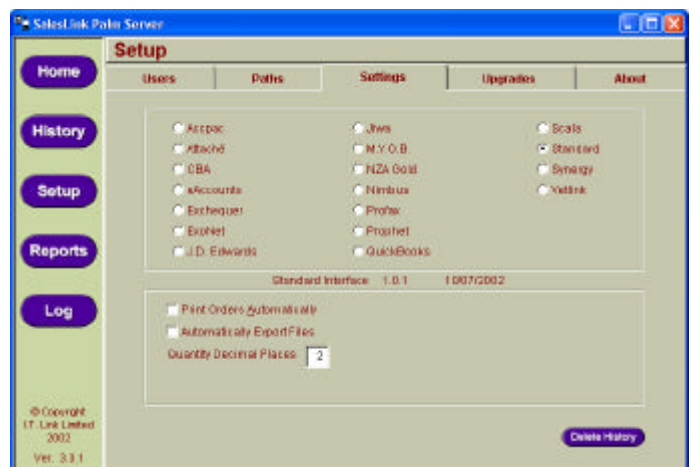
Date	Report	Date	Transaction ID	Customer ID	Start	Total	Order No.	Customer
10/07/02	SL78		DABRY	ORIANSL	0.02	3490y		PKT THD
10/07/02	SL78		ANEX	ORIANSL	629.07			Arco Account
10/07/02	SL78		BASEL	ORIANSL	56.95	543		Soal Bank
07/07/02	SL2002		CARSON	JL	67.50			Carson & Son
07/07/02	SL2001		COLLIER	JL	11661.10	TEST		Collier & Son
30/06/02	SL74		BETTER	ORIANSL	-270.30			Belland Tairi
30/06/02	SL73		TRATEST	ORIANSL	730.44	ddddd		ERCOU/INT:
30/06/02	SL74		BASEL	ORIANSL	9.09			Soal Bank
30/06/02	SL73		BETTER	CHARLES	184.01	12345		Belland Tairi
30/06/02	SL71		BASEL	ORIANSL	9.09	1234		Soal Bank
30/06/02	SL7		JONESAN	NT	246.15	at		Jones & Co
30/06/02	SL5		SMFH	JB	59.94			Smith & Son
30/06/02	SL4		CARSON	MM	200.00	555		Carson & Son
30/06/02	SL3		BROWN	MM	2311.53	123		John Brown

SalesLink Server transaction log

- Up to 40 simultaneous palm connections
- Interfaces for 18 commonly used accounting systems
- Server can deploy remote upgrades, data files or any palm file to mobile devices.
- A fully searchable transaction log allows re-exporting and re-printing of orders for Proof of Delivery (POD) electronic signature verification.
- Detailed communications log manages user access and security.
- Supports CDMA, GPRS, GSM, Modem and IP LAN connections.



Mobile device connection to the Internet



SalesLink Server setup options.

### Contact :

#### LAN / TCPIP Requirements

- Permanent Internet connection 56kbs or higher
- Fixed public IP address
- Access through firewall to default ports 34001 -34099

SalesLink Mobile Software, SalesLink Server, StockLink Remote, copyright I.T. Link Limited 2000,2001,2002. P O Box 1333, Christchurch New Zealand. Phone 64 3 374 6490 Fax 64 3 374 6493. Email - sales@itlink.co.nz

#### Host Minimum Hardware Specification

- A PC based computer with a pentium III or higher processor
- CD ROM drive for software Installation
- 128 MB of memory ( 256 MB Rec. ) Win 98,NT, 2000 or XP
- Hard disk space required for installation - 35 MB
- Available serial connection port for local connection